

Multiple-ID setting guide

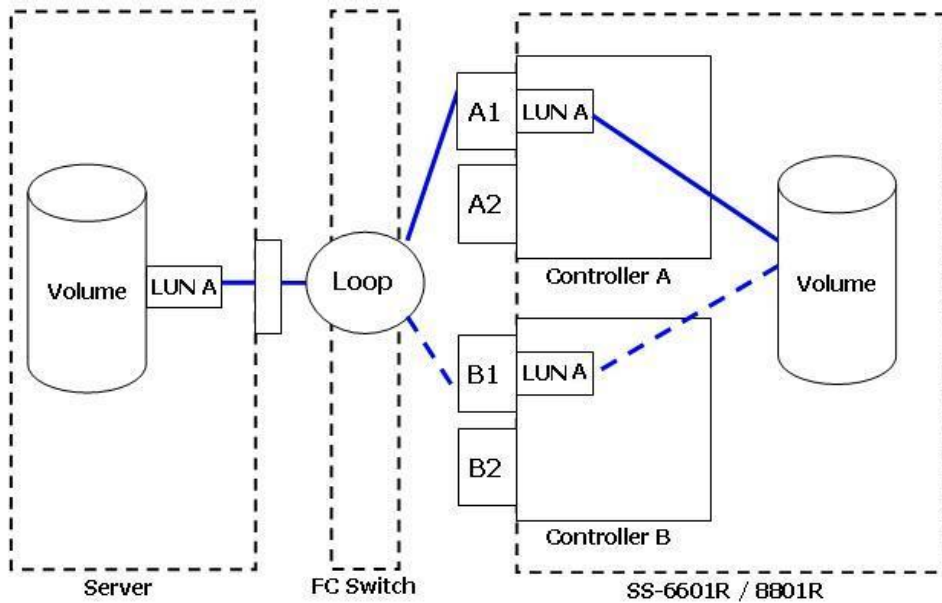
Create Date: 2008/9/26
Created by: Paysan Huang
Version: 1.0

1. Overview

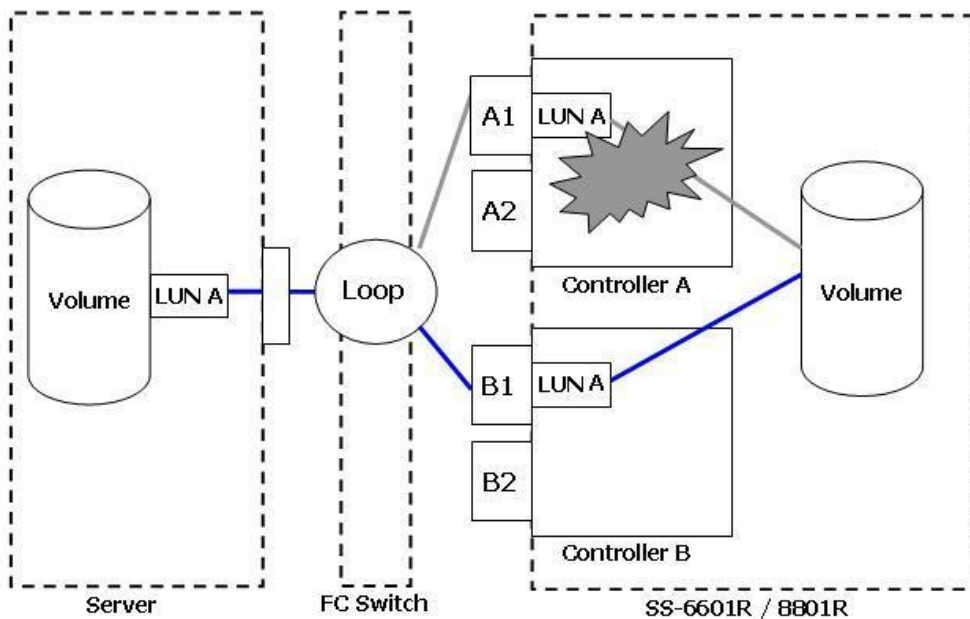
Arena SS-6601R / SS-8801R supports MTID (Multiple-ID) to present LUN with inheritable ID for making every LUN could be fail-over/fail-back successful while each controller of the redundant storage failed. MTID has to be cooperated with specific FC Switch.

2. Controller Fail-over topology

2-1 Normally, Volume was accessed through CtrlA1, shown as below.



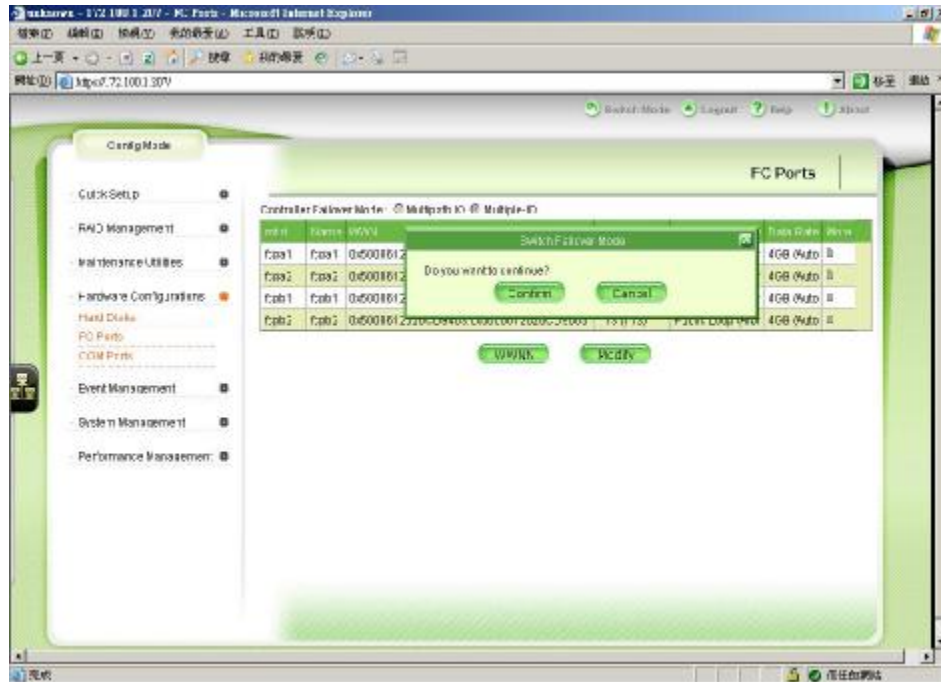
2-2 When CtrlA failed, Volume will be inherited by CtrlB1, shown as below.



3. Configuration

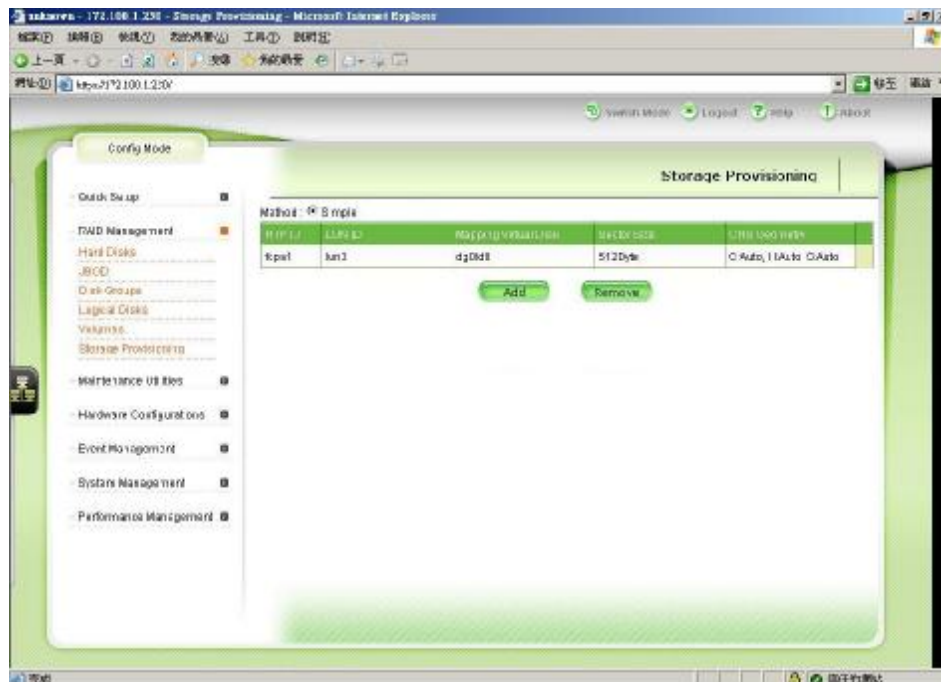
3-1 Set MTID mode

In Hardware Configurations->FC Ports, set Controller Failover Mode to “Multiple-ID”, and restart system to make it available.



3-2 Set DGOLD0 and Preferred Controller to “A”.

3-3 Set Storage Provisioning, add DGOLD0 mapping to fcpa1.



Appendix. Compatible List

. Fibre-Channel HBA

- LSI 7202XP-LC
- LSI 7204XP-LC
- LSI 7404XP-LC

. Fibre-Channel Switch

- Qlogic SAN box 5600